

## >> HYDRAULIC PUNCH EHPU-SERIES



### Applicable Products

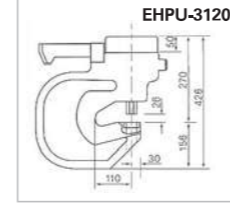
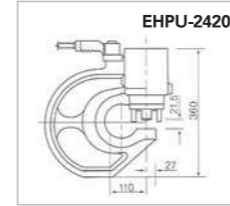
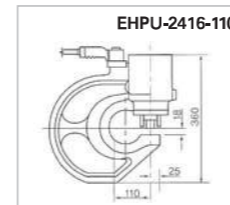
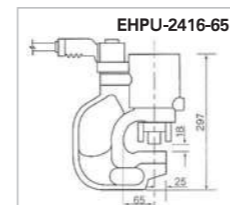
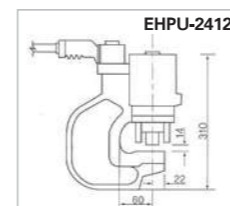
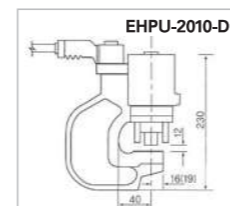
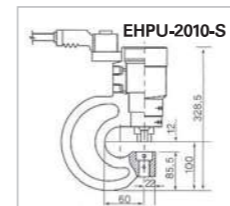


- >Capacity: 23-75ton
- >Hole Size: 8-31mm
- Max Operating Pressure: 700bar
- Max Punching Thickness: 20mm
- Max Punching Hole Size: 31Ø
- 7 standard models / Enable to maximize the efficiency of work
- Each punch includes 4set of puncher & die.
- All standard is double acting, but 'EHPU-2010-S' is single acting type.
- Most popular model is 'EHPU-3120 with KUP-2203HG-8H'.
- We guarantee the best capability for work.

Model	Cyl.Capacity	Max Punching Hole Size	Max Punching Thickness	Max Center Depth	Weight (kg)
EHPU-2010-S	23 ton	Ø 20.5 mm	10 mm	60 mm	13 kg
EHPU-2010-D	23 ton	Ø 20 mm	10 mm	60 mm	10 kg
EHPU-2412	30 ton	Ø 24 mm	12 mm	60 mm	15 kg
EHPU-2416-65	45 ton	Ø 24 mm	16 mm	65 mm	21 kg
EHPU-2416-110	45 ton	Ø 24 mm	16 mm	110 mm	28 kg
EHPU-2420	65 ton	Ø 24 mm	20 mm	110 mm	37 kg
EHPU-3120	75 ton	Ø 31 mm	20 mm	110 mm	75 kg



An application for aluminium angle punching with 26 sets of EHPU-2416



## >> PIPE BENDER EPB / PULLER EHP-SERIES

- >Max Bending Size: 4" (100A)
- >Max Bending Thickness: 4.9mm
- >Max Pressure: 700bar
- Make Smooth Wrinkle free bends
- Coupler port G 3/8

### Applicable Products



"One Shot" and "Sweep" One shot shoes give up to 90° bend without resetting. Sweep shoes are used where increasing radii are required for multiple parallel pipe installations.

Model	Cylinder Capacity	Max bending Thickness	Dimension	Shoes	Weight (kg)
EPB-2	10 ton	3.8 mm	750 × 700 × 250 mm	15-50A	13 KG
EPB-3	15 ton	4.5 mm	850 × 1050 × 300 mm	20-80A	27 KG
EPB-4	20 ton	4.9 mm	1150 × 1300 × 300 mm	32-100A	35 KG



### Applicable Products



- >Capacity: 10-50 ton
- >Spread Range: 240-520mm
- >Max Pressure: 700bar

Model	Cylinder Capacity	Max Reach	Max Spread	Cylinder Stroke	Weight (kg)
EHP-10	10 ton	180 mm	240 mm	150 mm	13.5
EHP-20	20 ton	280 mm	400 mm	150 mm	36.8
EHP-30	30ton	280 mm	420 mm	150 mm	46.7
EHP-50	50 ton	360 mm	520 mm	150 mm	85.3

>> **ANGLE & WIRE CUTTER EAC & EWC-SERIES**



- >Max Angle Size: 150\*150\*13T
- >Max Working Power: 90 ton
- >Max Working Pressure: 700bar
- 3 Standard models / Coupler port PT 3/8
- For cutting steel angle
- Cutting side is very clean, so no need additional touches.
- Better performance & less noise and dust than manual cutter

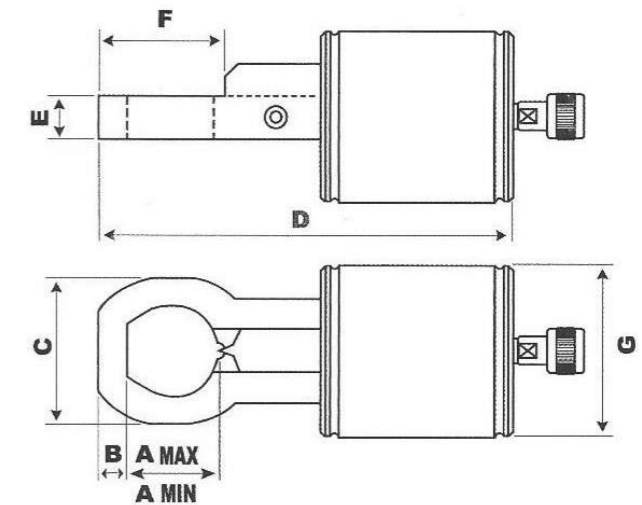


- EAC-100 with KUP-1503HG-8H

Model	Cyl.capacity	Max angle size	Suitable pump	Weight (kg)
EAC-75	30 ton	75 × 75 × 10T	KUP-45SVG-8H	25 kg
EAC-100	50 ton	100 × 100 × 13T	KUP-1503HG-8H	55 kg
EAC-150	90 ton	150 × 150 × 13T	KUP-1503HG-8H	150 kg

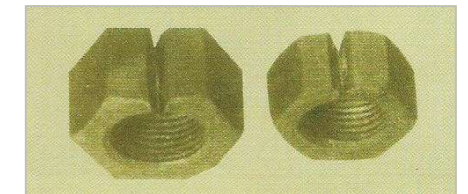


>> **NUT SPLITTER & FLANGE SPREADER ENS & EFS-SERIES**



**HYDRAULIC SPLITTERS!**

- >Capacity: 14 ton & 32.5 ton
- >Bolt range: 14 ton (M12-M24) / 32.5 ton (M20-M33)
- Max Working pressure: 700bar / Coupler port PT 3/8



Model	Capa	Stroke	Oil capa	Diemension (mm)							Suitable pump	Weight
				A	B	C	D	E	F	G		
ENS-1415	14 ton	15 mm	31.8 cc	15-45	12.5	73	221	23	62.5	78	EJP-1B or KUP-35RH	5.2 kg
ENS-32.520	32.5 ton	20 mm	93 cc	39-62	19	98	278	29	85	115	KUP-35RH	12 kg

**WIRE CUTTER for steel wire (max: Ø 32)**

- >Max Cutting Size: Ø 32 mm
- Max Working Pressure: 700bar



Model	Cylinder Capacity	Stroke	Max angle size	Suitable pump	Weight (kg)
EWC-32-N	20 ton	40 mm	Ø 32	EJP-1B or KUP-35RH	8.8 kg

**Battery operated cutter for steel wire, steel bar, reinforcing rod, Al/Cu ba**

- >Max Cutting Size: Ø 16 mm

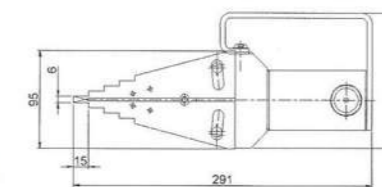


Model	Cylinder Capacity	Stroke	Max angle size	Including parts	Weight (kg)
EBCW-16	12.2 ton	16 mm	Ø 16	battery 1ea blade 2ea	7.3 kg

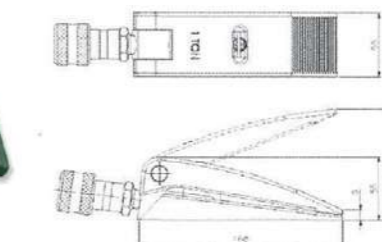
**HYDRAULIC FLANGE SPREADER!**

For flange spreading & gasket exchange

- Max Working pressure: 700bar / Coupler port PT 3/8



Model	EFS-661
Capacity	14 ton
Max spread	61mm
Tip clearance	6mm
Weight	7.1 kg
pump	EJP-1B or KUP-35RH



Model	EFS-949
Capacity	14 ton
Max spread	94mm
Tip clearance	9mm
Weight	2.0 kg
pump	EJP-1B or KUP-35RH

>> CUTTING TOOL **EBCC-SERIES**

**BATTERY OPERATED CUTTING TOOLS**



Material	EBCC16	EBCC32	EBCC40	EBCC55B	EBCC55	EBCC85
JIS 1 Wire rope , 6 x 7	16		22	25		
JIS 2 Wire rope , 6 x 12	16		25	30		
JIS 3 Wire rope , 6 x 19	16		25	30		
Soft copper rod			22	35		
Aluminum bar			20	28		
Soft steel bar, Under SS400			20	22		
Reinforcing rod			16	20		
Cu strands			41.6(1,000mm <sup>2</sup> )	41.6(1,000mm <sup>2</sup> )		
Al strands			40.7(980mm <sup>2</sup> )	46.2(1,260mm <sup>2</sup> )		
ACSR			38.4(810mm <sup>2</sup> )	46.2(1,260mm <sup>2</sup> )		
JIS 1 Guy wire , 1x7			15	15		
JIS 2 Guy wire , 1x19			20	20		
CCP cable	16	32	40	55	55	85
Lead cable	16	32	40	55	55	85
Underground cable	16	32	40	55	55	85
Capacity (ton)	2.4	2.4	8	10	7.5	7.5
Size (mm)	425x120x75	425x120x75	450x370x80	450x380x80	440x370x80	520x400x80
Weight (kg)	2.3	2.3	4.7	7	5	5.6
Standard parts	Battery 18V(2.0Ah)-1EA Charger - 1EA		Battery 18V(4.0Ah)-1EA Charger - 1EA			

-Battery: 18V 2.0Ah Lithium-ion 369g / 18V 4.0Ah Lithium-ion 612g  
-Charger: 110/220V 50/60Hz

>> CUTTING **ECC-N-SERIES**

**HYDRAULIC CUTTER HEAD TOOLS (WITHOUT PUMP)**



Material	ECC 40-N	ECC 55B-N	ECC 55-N	ECC 85B-N	ECC 85-N	ECC 100-N	ECC 132-N	ECC 180-N
JIS 1 Wire rope , 6 x 7	22	25						
JIS 2 Wire rope , 6 x 12	25	30						
JIS 3 Wire rope , 6 x 19	25	30						
Soft copper rod	22	35						
Aluminum bar	20	28						
Soft steel bar, Under SS400	20	22						
Reinforcing rod	16	20						
Cu strands	41.6 (1,000mm <sup>2</sup> )	41.6 (1,000mm <sup>2</sup> )		28.8 (500mm <sup>2</sup> )		41.6 (1,000mm <sup>2</sup> )	41.6 (1,000mm <sup>2</sup> )	41.6 (1,000mm <sup>2</sup> )
Al strands	40.7 (980mm <sup>2</sup> )	46.2 (1,260mm <sup>2</sup> )		29.4 (510mm <sup>2</sup> )		46.2 (1,260mm <sup>2</sup> )	46.2 (1,260mm <sup>2</sup> )	46.2 (1,260mm <sup>2</sup> )
ACSR	38.4 (810mm <sup>2</sup> )	46.2 (1,160mm <sup>2</sup> )						Exclusion
JIS 1 Guy wire , 1x7	15	15						93.6
JIS 2 Guy wire , 1x19	20	20						Exclusion
CCP cable	40	55	55	85	85	100	132	175
Lead cable	40	55	55	85	85	100	132	175
Underground cable	40	55	55	85	85	100	132	175
Capacity (ton)	8TON	10	7.5	5	7.5	8	8	27
Size (mm)	330 X96X58	394 X110X68	370 X140X42	410 X140X69	400 X194X88	470 X152X76	550 X185X76	958 X300X127
Weight (kg)	3.7	5.8	4.2	5	4.8	7.2	13	68

>> CUTTING TOOL ECC-SERIES

HYDRAULIC HAND CUTTING TOOLS (WITH PUMP)



Material	ECC24	ECC40	ECC55B	ECC55C	ECC85B	ECC85C
JIS 2 Wire rope , 6 x 12	24	25	30			
JIS 3 Wire rope , 6 x 19	24	25	30			
Soft copper rod	22	22	35			
Aluminum bar	20	20	28			
Soft steel bar, Under SS400	20	20	22			
Reinforcing rod	16	16	20			
Cu strands	24 (325mm <sup>2</sup> )	41.6 (1,000mm <sup>2</sup> )	41.6 (1,000mm <sup>2</sup> )		28.8 (500mm <sup>2</sup> )	
Al strands	24 (325mm <sup>2</sup> )	40.7 (980mm <sup>2</sup> )	46.2 (1,260mm <sup>2</sup> )		29.4 (510mm <sup>2</sup> )	
ACSR	24 (290mm <sup>2</sup> )	38.4 (810mm <sup>2</sup> )	46.2 (1,160mm <sup>2</sup> )			
JIS 1 Guy wire , 1x7	15	15	15			
JIS 2 Guy wire , 1x19	20	20	20			
CCP cable	24	40	55	55	85	85
Lead cable	24	40	55	55	85	85
Underground cable	24	40	55	55	85	85
Capacity (ton)	8	8	10	7.5	5	7.5
Size (mm)	500X150X48	590X150X48	658X117X68	650X190X60	678X140X69	680X220X69
Weight (kg)	4.4	5.8	8	6.2	7.2	7

>> CRIMPING TOOL ECT-SERIES

HYDRAULIC HAND CRIMPING TOOLS (WITH PUMP)

ECT240					
Capacity	6 ton	Stroke	14mm	Size	74X480 mm
				Weight	3.1 kg
A range of application	IEC 16-240mm <sup>2</sup> (16, 25, 35, 50, 70, 95, 120, 150, 185, 240) AIR(1/2) & GAS (5/16) Hose crimping, Octagen dies				

-Standard Dies 12set -AIR(1/2")AS(5/16"),(16,25,35,50,70,95,120,150,185,240)

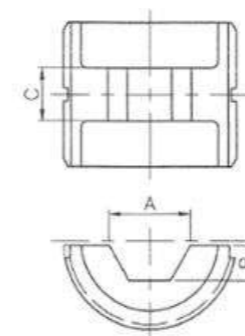
ECT400-32					
Capacity	12.2 ton	Stroke	32mm	Size	75X546 mm
				Weight	5.8 kg
A range of application	JIS 14-325mm <sup>2</sup> (14, 22, 38, 60, 80, 100, 150, 200, 250, 325) IEC 16-400mm <sup>2</sup> (16, 25, 35, 50, 70, 95, 120, 150, 185, 240, 300, 400) ACSR 32-160mm <sup>2</sup> , Terminal crimp 8-150mm 2Indent type IEC16-300mm <sup>2</sup> (16, 25, 35, 50, 70, 95, 120, 150, 185, 240, 300) Tap-off connector T20-T362				

-Standard Dies 12set -16,25,35,50,70,95,120,150,185,240,300,400

ECT400-20					
Capacity	12.2 ton	Stroke	20mm	Size	80X510 mm
				Weight	5.1 kg
A range of application	JIS 14-325mm <sup>2</sup> (14, 22, 38, 60, 80, 100, 150, 200, 250, 325) IEC 16-400mm <sup>2</sup> (16, 25, 35, 50, 70, 95, 120, 150, 185, 240, 300, 400) ACSR 32-160mm <sup>2</sup> , Terminal crimp 8-150mm 2 Indent type IEC16-185mm <sup>2</sup> (16, 25, 35, 50, 70, 95, 120, 150, 185) Tap-off connector T20-T362				

-Standard Dies 12set -16,25,35,50,70,95,120,150,185,240,300,400


CRIMPING TOOLS DIES(400 SERIES)




DIE no.	A	B	C	DIE no.	A	B	C
10	28.3	2.72	10	120	17.8	7.7	13
16	32	3.19	10	150	19.6	8.5	13
25	38.5	3.85	10	185	21.9	9.5	13
35	42.2	4.42	10	240	26.33	11.4	13
50	46.8	4.98	13	300	28.32	12.2	13
70	13.9	6	13	400	32	14	13
95	16.2	7	13				

>> CRIMPING TOOL EBCP-SERIES


BATTERY OPERATED CRIMPING TOOLS

EBCP630-40					
	Capacity	12.2 ton	Stroke	42mm	Size 446X332X80 mm
					Weight 7.8 kg
A range of application	JIS 14-325mm <sup>2</sup> (14, 22, 38, 60, 80, 100, 150, 200, 250, 325) IEC 16-630mm <sup>2</sup> (16, 25, 35, 50, 70, 95, 120, 150, 185, 240, 300, 400, 500, 630) ACSR 32-160mm <sup>2</sup> , Terminal crimp 8-150mm <sup>2</sup> Indent type IEC16-300mm <sup>2</sup> (16, 25, 35, 50, 70, 95, 120, 150, 185, 240, 300) Tap-off connector T20-T362				


-Standard parts / Battery : 18vLithium-ion battery/4Ah , Dies-500,630 , Round dies

EBCP630-40					
	Capacity	12.2 ton	Stroke	32mm	Size 425X314X80 mm
					Weight 5.95 kg
A range of application	JIS 14-325mm <sup>2</sup> (14, 22, 38, 60, 80, 100, 150, 200, 250, 325) IEC 16-400mm <sup>2</sup> (16, 25, 35, 50, 70, 95, 120, 150, 185, 240, 300, 400) ACSR 32-160mm <sup>2</sup> , Terminal crimp 8-150mm <sup>2</sup> Indent type IEC16-300mm <sup>2</sup> (16, 25, 35, 50, 70, 95, 120, 150, 185, 240, 300) Tap-off connector T20-T362				


-Standard parts / Battery : 18vLithium-ion battery/4Ah , Dies -150,185,240,300,400

EBCP630-40					
	Capacity	12.2 ton	Stroke	42mm	Size 434X314X80 mm
					Weight 6.6 kg
A range of application	JIS 14-325mm <sup>2</sup> (14, 22, 38, 60, 80, 100, 150, 200, 250, 325) IEC 16-400mm <sup>2</sup> (16, 25, 35, 50, 70, 95, 120, 150, 185, 240, 300, 400) ACSR 32-160mm <sup>2</sup> , Terminal crimp 8-150mm <sup>2</sup> Indent type IEC16-300mm <sup>2</sup> (16, 25, 35, 50, 70, 95, 120, 150, 185, 240, 300) Tap-off connector T20-T362				

-Standard parts / Battery : 18vLithium-ion battery/4Ah , Dies 5set-150,185,240,300,400

EBCP630-40					
	Capacity	5.3 ton	Stroke	30mm	Size 440X335X80 mm
					Weight 5.3 kg
A range of application	IEC 16-300mm <sup>2</sup> (16, 25, 35, 50, 70, 95, 120, 150, 185, 240, 300) Andersone type connector (Desless)				

-Standard parts / Battery : 18vLithium-ion battery/4Ah , Dieless


EBCP630-40					
	Capacity	12.2 ton	Stroke	20mm	Size 380X320X80 mm
					Weight 4.9 kg
A range of application	JIS 14-325mm <sup>2</sup> (14, 22, 38, 60, 80, 100, 150, 200, 250, 325) IEC 16-400mm <sup>2</sup> (16, 25, 35, 50, 70, 95, 120, 150, 185, 240, 300, 400) ACSR 32-160mm <sup>2</sup> , Terminal crimp 8-150mm <sup>2</sup> Indent type IEC16-185mm <sup>2</sup> (16, 25, 35, 50, 70, 95, 120, 150, 185) Tap-off connector T20-T362				

-Standard parts / Battery : 18vLithium-ion battery/4Ah , Dies 5set-150,185,240,300,400


>> CRIMPING TOOL EBCP-SERIES

BATTERY OPERATED CRIMPING TOOLS


Excluded battery weight!

EBCP300					
	Capacity	8 ton	Stroke	20mm	Size 120X475X85 mm
					Weight 4.0 kg
A range of application	JIS 14-250mm <sup>2</sup> (14, 22, 38, 60, 80, 100, 150, 200, 250) IEC 16-300mm <sup>2</sup> (16, 25, 35, 50, 70, 95, 120, 150, 185, 240, 300) ACSR 32-120mm <sup>2</sup> , Terminal crimp 8-120mm <sup>2</sup> Indent type IEC16-185mm <sup>2</sup> (16, 25, 35, 50, 70, 95, 120, 150, 185) Tap-off connector T20-T288				


-Standard parts / Battery : 18vLithium-ion battery/4Ah , Dies 5set-120,150,185,240,300

EBCP240					
	Capacity	6 ton	Stroke	14mm	Size 120X425X75 mm
					Weight 1.95 kg
A range of application	IEC 16-240mm <sup>2</sup> AIR (1/2) & GAS (5/16) Hose crimping, Octagen dies				


-Standard parts / Battery : 18vLithium-ion battery / 4Ah , Dies 12set-16, 25, 35, 50, 70, 95, 120, 150, 185, 240

EBCP185					
	Capacity	8 ton	Stroke	20mm	Size 120X475X85 mm
					Weight 4.0 kg
A range of application	Indent type: 16-50, 70-185 2 types IEC 16-185 mm <sup>2</sup> (16, 25, 35, 50, 70, 95, 120, 150, 185)				

-Standard parts / Battery : 18vLithium-ion battery/4Ah , Indent "M" type2 set-16~50,70~185, "F" type2 set-16~50,70~185

EBCP25					
	Capacity	1.5 ton	Stroke	5mm	Size 120X390X85 mm
					Weight 1.65 kg
A range of application	Non-Insulated Solderless Terminals, 1.5-25SQ				

-Standard parts / Battery : 18vLithium-ion battery/4Ah , Indent Die 2set-1.5,2.5,6,10/16,25, Hex dies 1set - 10,16,25

EBKOP-2(for knock-out punching)					
	Capacity	8 ton	Stroke	25mm	Size 120X480X85 mm
					Weight 4.7 kg
A range of application	B16(1/2)", B22(3/4)", B28(1)", B36(1_3/4)", B42(1_1/2)", B54(2)"				
Punching Thickness	3.2 (under SS400), 1.6 (under SUS)				

-Standard parts / Battery : 18vLithium-ion battery/4Ah , EBKOP-2(B16~B54)-6SET

>> CRIMPING TOOL ECTN-SERIES

HYDRAULIC CRIMPING TOOLS (WITHOUT PUMP)

ECT240-N					
Capacity	6 ton	Stroke	14mm	Size	74X190mm
				Weight	1.5 kg
A range of application	IEC 16-240mm <sup>2</sup> (16, 25, 35, 50, 70, 95, 120, 150, 185, 240) AIR (1/2) & GAS (5/16) Hose crimping, Octagen dies				
Using pump	EJP-1B or KUP-35RH or KUP-45SVG				

-Standard Dies 12set -AIR(1/2"), GAS(5/16"), (16,25,35,50,70,95,120,150,185,240) / MAX Pressure : 500Bar

ECT400-32-N					
Capacity	12.2 ton	Stroke	32mm	Size	75X300mm
				Weight	4.0 kg
A range of application	JIS 14-325mm <sup>2</sup> (14, 22, 38, 60, 80, 100, 150, 200, 250, 325) IEC 16-400mm <sup>2</sup> (16, 25, 35, 50, 70, 95, 120, 150, 185, 240, 300, 400) ACSR 32-160mm <sup>2</sup> , Terminal crimp 8-150mm <sup>2</sup> Indent type, IEC16-300mm <sup>2</sup> (16, 25, 35, 50, 70, 95, 120, 150, 185, 240, 300) Tap-off connector T20-T365				
Using pump	EJP-1B or KUP-35RH or KUP-45SVG				

-Standard Dies 12set -16,25,35,50,70,95,120,150,185,240,300,400

ECT400-20-N					
Capacity	12.2 ton	Stroke	20mm	Size	80X260mm
				Weight	3.54 kg
A range of application	JIS 14-325mm <sup>2</sup> (14, 22, 38, 60, 80, 100, 150, 200, 250, 325) IEC 16-400mm <sup>2</sup> (16, 25, 35, 50, 70, 95, 120, 150, 185, 240, 300, 400) ACSR 32-160mm <sup>2</sup> , Terminal crimp 8-150mm <sup>2</sup> Indent type, IEC16-185mm <sup>2</sup> (16, 25, 35, 50, 70, 95, 120, 150, 185) Tap-off connector T20-T365				
Using pump	EJP-1B or KUP-35RH or KUP-45SVG				

-Standard Dies 12set -16,25,35,50,70,95,120,150,185,240,300,400

>> CRIMPING TOOL ETCTN-SERIES

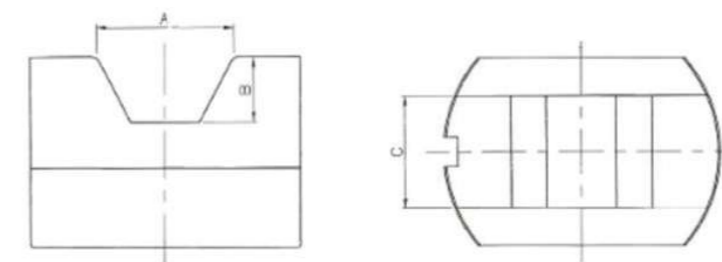
HYDRAULIC CRIMPING TOOLS (WITHOUT PUMP)



MODEL	ETCT630-N	ETCT800-N	ETCT1000-N
Capacity	25Ton	35Ton	45Ton
Stroke	29mm	35mm	30mm
Size	249mm	269mm	274mm
Weight	5 kg (exclude dies)	7.5 kg (exclude dies)	9 kg (exclude dies)
A range of application	Copper hexagon		
	300-630mm <sup>2</sup>	400-800mm <sup>2</sup>	500-1000mm <sup>2</sup>
Using pump	EPA-1B or KUP-35RH or KUP-45SVG		
Standard Dies	300, 400, 500, 630	400, 500, 630, 800	500, 630, 800, 1000


Crimping Tools Dies

DIE NO.	A	B	MODEL	C	MODEL	C	MODEL	C
300	28.3	12.2	ETCT-630-N					
400	32	14	ETCT-631-N	27	ETCT-800-N	28		
500	38.5	16	ETCT-632-N	27	ETCT-801-N	28	ETCT-1000-N	30
630	42.2	17.5	ETCT-633-N	27	ETCT-802-N	28	ETCT-1001-N	30
800	46.8	19.8			ETCT-803-N	28	ETCT-1002-N	30
1000	13.9	6					ETCT-1003-N	30




>> CRIMPING TOOL ETCT-SERIES


HYDRAULIC CRIMPING TOOLS (WITHOUT PUMP)

	ETCT100					
	Capacity	100 ton	Stroke	30mm	Size	175(Dia)x362(H)mm
					Weight	28 kg
	A range of application	Maximum length inside dies Steel : 32mm , AL : 52mm , Copper : 64mm				
Using pump	KUP-753,1503,2203,3503					

-Order based Dies

	ETCT150					
	Capacity	150 ton	Stroke	45mm	Size	208(Dia)x481(H)mm
					Weight	53 kg
	A range of application	Maximum length inside dies Steel : 40mm , AL : 86mm , Copper : 86mm				
Using pump	KUP-753,1503,2203,3503					

-Order based Dies

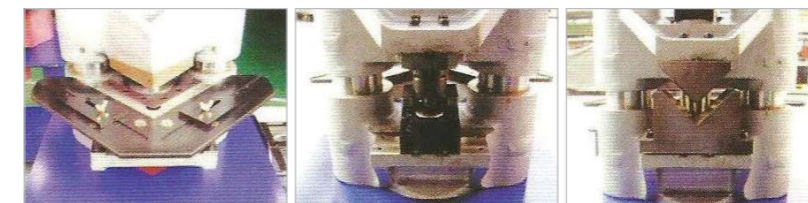
	ETCT200					
	Capacity	200 ton	Stroke	45mm	Size	240(Dia)x500(H)mm
					Weight	86 kg
	A range of application	Maximum length inside dies Steel : 42mm , AL : 95mm , Copper : 95mm				
Using pump	KUP-753,1503,2203,3503					

-Order based Dies

>> NOTCHING MACHINE ENM-SERIES

**ANGLE NOTCHING MACHINE IS...**  
possible to perform 3 kinds of works, notching, bending, and punching in one unit.

- Easy to use for working with 'the angle square flange mold'.
- Can produce high quality goods by notching, bending, and punching in precise measurements.
- Can increase productivity by reducing welding area.
- Because of clean bending face, you can bend at perfect right angles.
- Having wheels on the bottom.

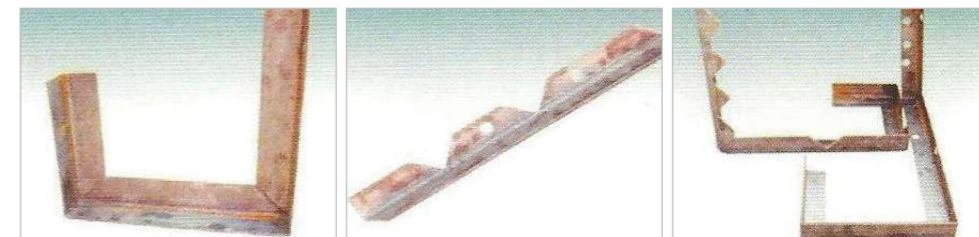
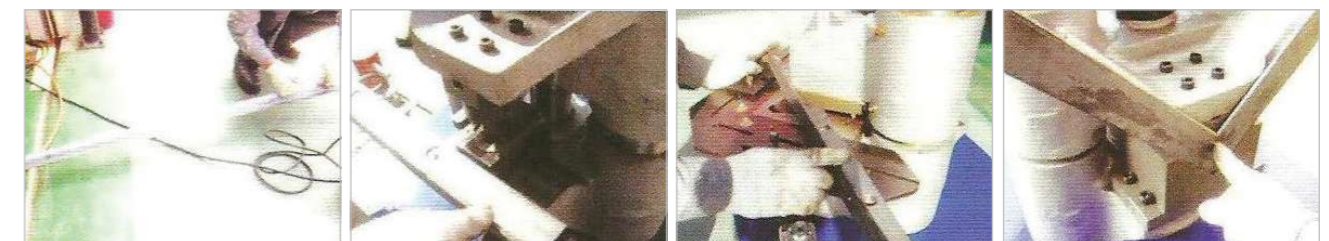


Notching

Punching

Bending

Model	Max Angle size (mm)	Punching dia (mm)	Max Punching hole (mm)	Suitable pump	Function
ENM-100	100x100x13T	18, 20, 22, 24	10Tx28	KUP-1503HG	Notching Bending Punching
ENM-150	150x150x12T	-	-	KUP-1503HG	Notching



>> ACCESSORY

>> ACCESSORY

ITEM	MODEL NO.	DESCRIPTION
MANUAL VALVE (1/2HP)	KSVM-3 KSVM-4	Hand pumps and electric pumps for use of both single and double acting
MANUAL VALVE (1,2,3HP)	KMVM-3 KMVM-4	
SOLENOID VALVE (1/2HP)	KSVS-2C KSVS-2H KSVS-4H KSVS-4A	By operating the solenoid to an electrical signal to control the fluid direction.
SOLENOID VALVE (1,2,3HP)	KSVM-2C KSVM-2H KSVM-4H KSVM-4A	
PILOT CHECK VALVE (1/2HP)	KVPCS-10 KVPCW-10	Check valve with the same function and in the reverse direction when the pilot fluid supplied to flow.
PILOT CHECK VALVE (1,2,3HP)	KVPCS-20 KVPCW-20	
NEEDLE VALVE	KNV-13	Adjust cylinder acting speed by adjusting oil capacity.
THROTTLE CHECK VALVE	KTCV-13	Limit the main or pilot oil flow of one or two actuator ports.
STOP VALVE	KTMV 2575	Adjust cylinder acting speed by adjusting oil capacity.
MANIFOLD (2-PORT)	KTMF 2522	For use of two cylinders with one pump.
MANIFOLD (4-PORT)	KTMF 2544	For use of several cylinders with one pump.

ITEM	MODEL NO.	DESCRIPTION	
MANIFOLD (6-PORT)	KTMFO 2529	For use of several cylinders with one pump.	
MANIFOLD (3-PORT)	KTMFY 2529	For use of two cylinders with one pump.	
GAUGE	KTPG 64 KTPG-100 KTPG 100-25	Gauge face Dia 64 mm X 1000 bar Gauge face Dia 100 mm X 1000 bar Gauge face Dia 100 mm X 2500 bar	
GAUGE BLOCK	KTGA 7001	Gauge block for easy mounting of a pressure gauge onto system	
GAUGE ADAPTOR	KTGA 7002	Gauge block for easy mounting of a pressure gauge onto system	
HOSE	KTHS 700	Max. pressure 700 bar	
COUPLER	KTBC 381M		3/8" PT Pin type (Male)
	KTBC 381F		3/8" PT Pin type (Female)
PRESSURE SWITCHES	KTPSC 7000	Pressure 700 bar	